



EW..M type directional solenoid valves - 2 way / 2 positions

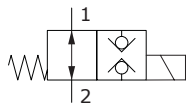
- Direct acting
- Poppet type
- Normally open and closed configurations
- With check in both directions
- From SAE08 to SAE10 cavities

Technical specifications and diagrams are measured with mineral oil of 46 cSt viscosity at 40°C (104°F) temperature.

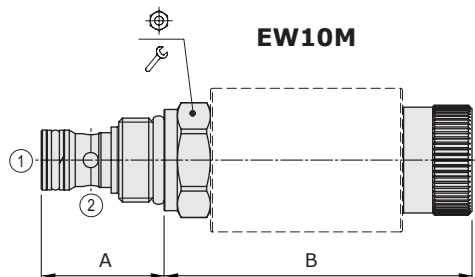
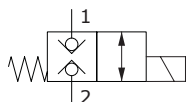
	EW08M	EW10M
Nominal flow	20 l/min (5.28 US gpm)	40 l/min (10.6 US gpm)
Max. pressure	250 bar (3600 psi)	350 bar (5075 psi)
Oil leakage	at 210 bar (3050 psi) 0.25 cm ³ /min (0.015 in ³ /min)	0.25 cm ³ /min (0.015 in ³ /min)
Fluid	mineral based oil	
Viscosity	10-200 cSt	
Max level of contamination	18/16/13 ISO4406	
Fluid temperature	with NBR seals with FPM seals	from -20°C (-4°F) to 80°C (176°F) from -20°C (-4°F) to 100°C (212°F)
Environmental temp. for working conditions	from -20°C (-4°F) to 50°C (122°F)	
Cavity	SAE 08/2	SAE 10/2
Coil type*	BER	BH
Nominal voltages	12 VDC - 24 VDC ± 10%	
Power rating	22.8 W (12 VDC) - 22.5 W (24 VDC)	33 W
Weight	0.15 kg (0.33 lb)	0.30 kg (0.66 lb)

NOTE - For different conditions, please contact Walvoil Sales Dpt. - *For coils further features see from page 206.

Normally open configuration



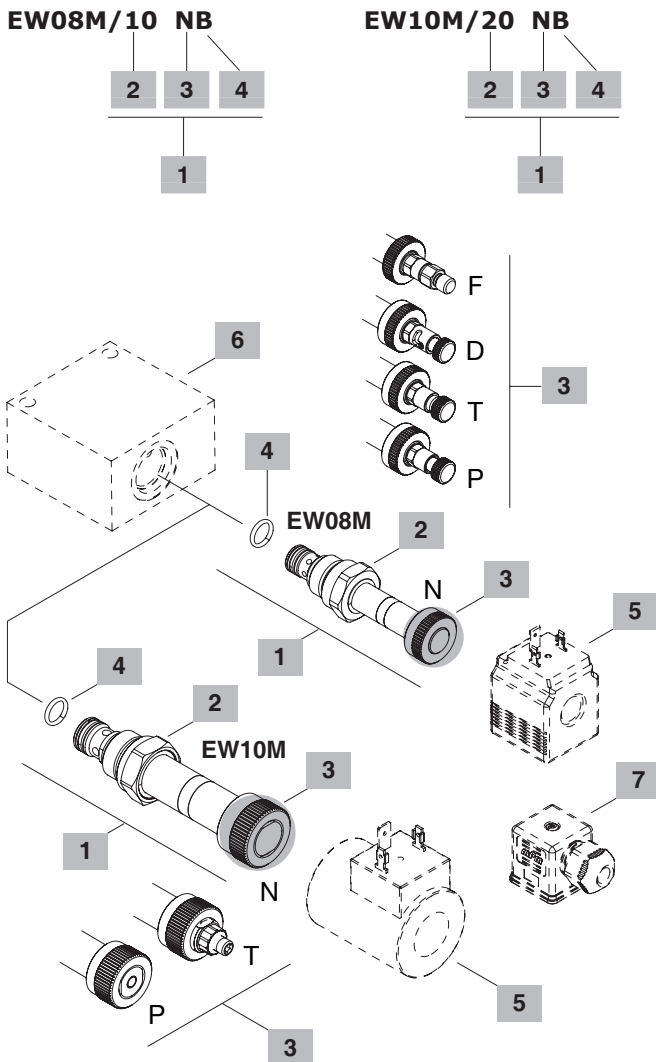
Normally closed configuration



Valve type	A		B				Nm	lbft
	mm	in	mm	in				
EW08M/10NB	28	1.10	60.2	2.37	24	30	22	
EW08M/20NB	28	1.10	62.5	2.46	24	30	22	
EW10M/20NB	32.5	1.28	81.3	3.20	27	50	37	

For dimensions with different type of emergency see page 213

Ordering codes and description composition



1 Cartridges

TYPE	CODE	DESCRIPTION
SAE cavity 08/2		
EW08M/10NB	0EW08002014	Normally open (N.O.) without emergency
EW08M/10FB	0EW08002015	(N.O.) pull button emergency
EW08M/10TB	0EW08002016	(N.O.) screw type emergency
EW08M/20NB	0EW08002018	Normally closed (N.C.) without emergency
EW08M/20PB	0EW08002019	(N.C.) push button emergency
EW08M/20TB	0EW08002020	(N.C.) screw type emergency
EW08M/20DB	0EW08002021	(N.C.) push type with detent emergency
SAE cavity 10/2		
EW10M/20NB	0EW10002008	Normally closed (N.C.) without emergency
EW10M/20TB	0EW10002009	(N.C.) screw type emergency
EW10M/20PB	0EW10002010	(N.C.) push button emergency

2 Spool

TIPO	DESCRIZIONE
1	Configurazione normalmente aperta
2	Configurazione normalmente chiusa

3 Emergency

TYPE	DESCRIPTION
N	Without emergency
P	Push button type (N.C.)
T	Screw type (N.C. - N.O. for EW08M / N.C. for EW10M)
D	Push type with detent (N.C.)
F	Pull button type (N.O.)

4 Seals

TYPE	DESCRIPTION
B	NBR (Buna) o-ring seals, std configuration
V	FPM (Viton) o-ring seals, contact Sales Dept.

5 Coils

TYPE	CODE	DESCRIPTION
BER 12VDC	4SLE001200	12VDC-ISO4400 coil for EW08M
BH 12VDC	4SLD001200	12VDC-ISO4400 coil for EW10M

For complete coils list see from page 206

6 Valve body

TYPE	CODE	DESCRIPTION
SAE 08/2-SAE8	3CC0820K11	Aluminium body for cavity 08 valve, SAE8 std thread
SAE 10/2-SAE8	3CC1020K11	Aluminium body for cavity 10 valve, SAE8 std thread

Note: aluminium body can stand up to 210 bar (3050 psi)
For steel bodies or different threading see from page 215

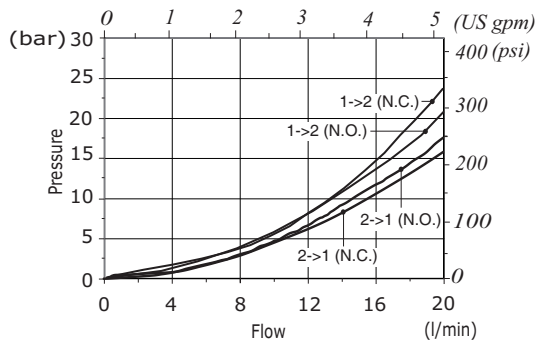
7 Connector

TYPE	CODE	DESCRIPTION
ISO4400	4CN1009995	Connector

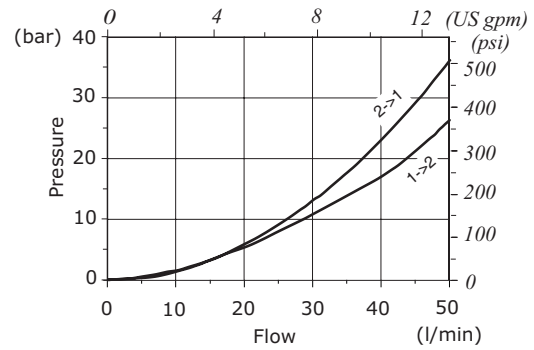
For complete connectors list see from page 206

Rating diagrams

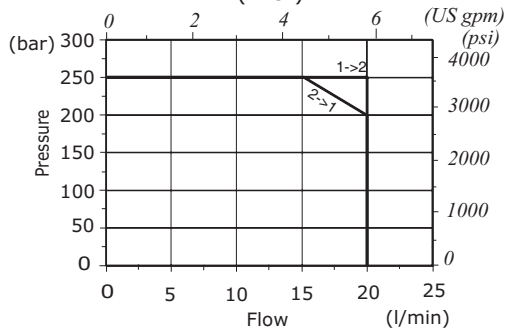
EW08M pressure drop vs. flow



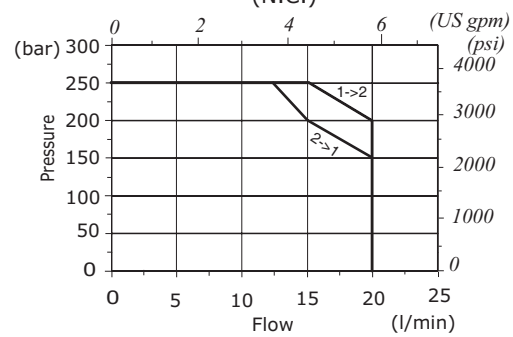
EW10M pressure drop vs. flow (N.C.)



EW08M performance limit (N.O.)



EW08M performance limit (N.C.)



EW10M performance limit (N.C.)

