



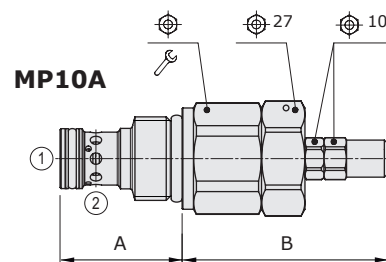
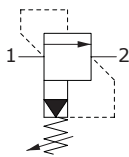
## MP..A type pressure relief valves - 2 way

- Pilot operated
- Spool type
- From SAE10 to SAE12 cavities

Technical specifications and diagrams are measured with mineral oil of 46 cSt viscosity at 40°C (104°F) temperature.

	MP10A	MP12A
Nominal flow	60 l/min (16 US gpm)	100 l/min (26.4 US gpm)
Max. pressure	350 bar (5100 psi)	
Oil leakage	80% of max. pressure setting	25 cm <sup>3</sup> /min (1.525 in <sup>3</sup> /min)
Fluid	mineral based oil	
Viscosity	10-200 cSt	
Max level of contamination	20/18/14 ISO4406	
Fluid temperature	with NBR seals with FPM seals	from -20°C (-4°F) to 80°C (176°F) from -20°C (-4°F) to 100°C (212°F)
Environmental temp. for working conditions	from -20°C (-4°F) to 50°C (122°F)	
Cavity	SAE 10/2	SAE 12/2
Weight	0.190 kg (0.42 lb)	0.300 kg (0.661 lb)

NOTE - For different conditions, please contact Walvoil Sales Dpt.

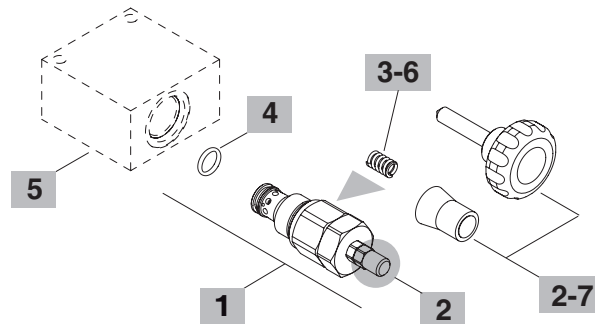
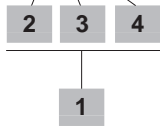


Valve type	A		B		⌀	⌘
	mm	in	mm	in		
<b>MP10A/OS</b>	32.3	1.27	54.5	2.15	27	50 37
<b>MP12A/OS</b>	46	1.81	52.5	2.07	32	80 59

For dimensions with different type of adjustment see page 212

## Ordering codes and description composition

### MP10A/0S2B



#### 1 Cartridges

TYPE	CODE	DESCRIPTION
<b>SAE cavity 10/2</b>		
MP10A/0S1B	OMP10002017	Pressure range <b>1</b>
MP10A/0S2B	OMP10002015	Pressure range <b>2</b>
MP10A/0S3B	OMP10002018	Pressure range <b>3</b>

#### SAE cavity 12/2

MP12A/0S1B	OMP12002003	Pressure range <b>1</b>
MP12A/0S2B	OMP12002000	Pressure range <b>2</b>
MP12A/0S3B	OMP12002005	Pressure range <b>3</b>

#### 2 Adjustments

TYPE	DESCRIPTION
<b>S</b>	Screw with cap
<b>V</b>	With handwheel (part code: see point <b>7</b> )
<b>X</b>	Valve set with antitampering cap (part code: see point <b>7</b> )

#### 3 Pressure range

TYPE	DESCRIPTION
<b>1</b>	Pressure range 5÷50 bar (72.5÷725 psi)
<b>2</b>	Pressure range 50÷220 bar (725÷3190 psi)
<b>3</b>	Pressure range 150÷350 bar (2175÷5100 psi)

#### 4 Seals

TYPE	DESCRIPTION
<b>B</b>	<b>NBR (Buna)</b> o-ring seals, std configuration
<b>V</b>	<b>FPM (Viton)</b> o-ring seals, contact Sales Dept.

#### 5 Valve body

TYPE	CODE	DESCRIPTION
<b>SAE 10/2-G 3/8</b>	3CC1020C11	Aluminium body for cavity 10 valve, G 3/8 std thread
<b>SAE 12/2-G 3/8</b>	3CC1220D11	Aluminium body for cavity 12 valve, G 3/8 std thread

Note: aluminium body can stand up to 210 bar (3050 psi)  
For steel bodies or different threading see from page 215

#### 6 Springs

TYPE	CODE	DESCRIPTION
<b>1</b>	3ML1081400	Pressure range <b>1</b> - white band
<b>2</b>	3ML1081401	Pressure range <b>2</b> - no band
<b>3</b>	3ML1081402	Pressure range <b>3</b> - red band

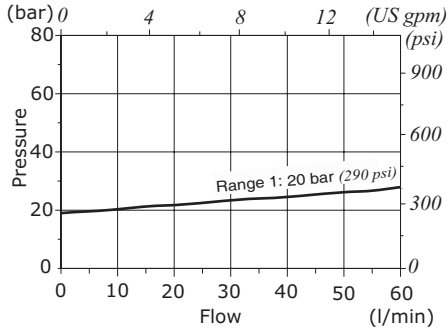
#### 7 Accessories

TYPE	CODE	DESCRIPTION
-	4VL2307007	Handwheel (for MP10A valve)
-	4VL2307001	Handwheel (for MP12A and MP16A valves)
-	4COP116420	Antitampering cap

**Rating diagrams**

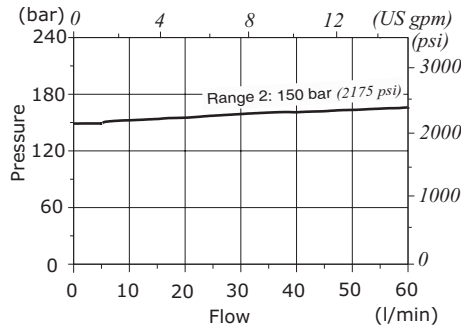
**MP10A pressure vs. flow**

Std. setting at 5 l/min (1.32 US gpm)



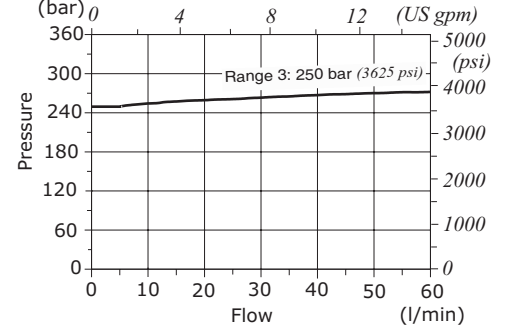
**MP10A pressure vs. flow**

Std. setting at 5 l/min (1.32 US gpm)



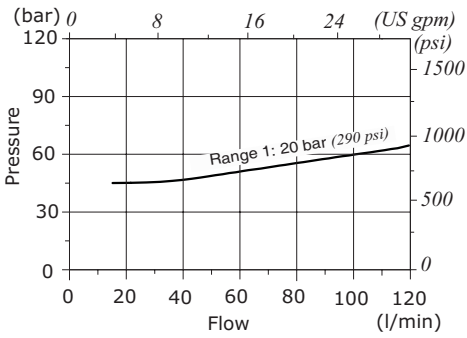
**MP10A pressure vs. flow**

Std. setting at 5 l/min (1.32 US gpm)



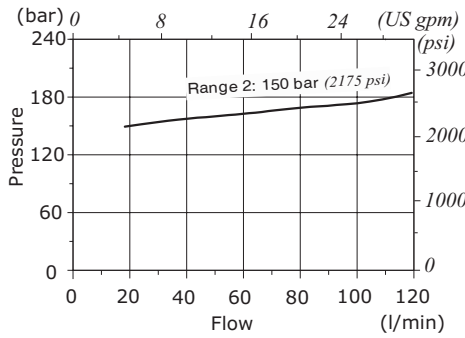
**MP12A pressure vs. flow**

Std. setting at 5 l/min (1.32 US gpm)



**MP12A pressure vs. flow**

Std. setting at 5 l/min (1.32 US gpm)



**MP12A pressure vs. flow**

Std. setting at 5 l/min (1.32 US gpm)

